

- FR** Four De Dietrich **DOE 900 X**
GUIDE D'INSTALLATION ET INSTRUCTIONS D'EMPLOI
- ES** Horno De Dietrich **DOE 900 X**
MANUAL DE INSTALACIÓN Y UTILIZACIÓN
- IT** Forno De Dietrich **DOE 900 X**
MANUALE PER L'INSTALLAZIONE E L'UTILIZZO
- EN** De Dietrich Oven **DOE 900 X**
GUIDE TO INSTALLATION AND USE
- DE** De Dietrich Ofen **DOE 900 X**
EINBAU- UND BETRIEBSANLEITUNG
- DA** Ovn De Dietrich **DOE 900 X**
INSTALLATIONS- OG BRUGERVEJLEDNING
- NL** De Dietrich Oven **DOE 900 X**
INSTALLATIEGIDS EN GEBRUIKSAANWIJZINGEN
- PT** Forno De Dietrich **DOE 900 X**
MANUAL DE INSTALAÇÃO E INSTRUÇÕES DE UTILIZAÇÃO



1 / NOTICES TO THE USER	
• Safety instructions _____	38
• Caring for the Environment _____	39
2 / INSTALLING YOUR APPLIANCE	
• Build-in _____	40
• Electrical connection _____	42
• Changing the power supply cable _____	43
3 / CARING FOR AND CLEANING YOUR APPLIANCE	
• Cleaning the door	
◦ Disassembling the door _____	44
◦ Reassembling the door _____	44
• Disassembling of the door glasses _____	45
• Replacing the oven lamp _____	45
4 / TROUBLESHOOTING _____	46
5 / AFTER-SALES SERVICE _____	47



Important

Keep this user guide with your appliance. If the appliance is ever sold or transferred to another person, ensure that the new owner receives the user guide. Please become familiar with these recommendations before installing and using your oven. They were written for your safety and the safety of others.

• SAFETY INSTRUCTIONS

- This oven was designed for use by private individuals in their homes. It is intended solely for cooking foodstuffs. This oven does not contain any asbestos-based components.
- Please make sure children do not play with the appliance.
- When you receive the appliance, unpack it or have it unpacked immediately. Give it an overall inspection. Make note of any concerns or reservations on the delivery slip and make sure to keep a copy of this form.
- Your appliance is intended for standard household use. Do not use it for commercial or industrial purposes or for any other purpose than that for which it was designed.
- Do not modify or attempt to modify any of the characteristics of this appliance. This would be dangerous to your safety.
- **WARNING:** accessible parts may be hot when in use. It is advisable to keep small children away from the appliance.
- Never pull your appliance by the door handle.
- Before using your oven for the first time, heat it while empty for approximately 15 minutes. Make sure that the room is sufficiently ventilated. You may notice a particular odour, or a small release of smoke. All of this is normal.
- **WARNING:** accessible parts may become hot when the grill is used. It is advisable to keep children away from the appliance.
- When in use, the appliance becomes hot. Be careful not to touch the heating elements located inside the oven.
- When placing dishes inside or removing them from the oven, do not place your hands close to the upper heating elements and use heat-protective kitchen gloves.
- At the end of cooking, do not pick up oven or grill items (grid, rotisserie,...) with your bare hands.
- Never place aluminium foil directly in contact with the floor of the oven, as accumulated heat may cause deterioration of the enamel.
- Do not place heavy weights on the oven door when open, and make sure that children cannot climb or sit on it.
- The oven must be turned off when cleaning inside the oven.
- This appliance is not intended to be used by persons (including children) with reduced physical, sensory or mental abilities, or persons lacking experience or awareness, unless using it with the help of a person responsible for their safety, or under supervision and with prior instruction in its use.
- In addition to the accessories supplied with your oven, only use dishes capable of withstanding high temperatures (follow the manufacturer's instructions).
- After using your oven, make sure that all the controls are in their stop position.
- Do not use your oven as a larder or to store any items after use.
- Never use steam or high-pressure devices to clean the oven (electrical safety requirement).

– For your safety, your oven is equipped with an AUTOMATIC STOP, if you forget to turn off your oven by mistake. After 23 hours and 30 minutes of continuous use, the AS (Automatic Stop) feature will be activated and your oven will turn itself off. AS or Auto Stop will be displayed instead of the time and a series of successive beeps will be emitted for a short time.

Before maintenance or cleaning disconnect the appliance from the mains and wait for it to cool down.

The user must not change the appliance supply cable. For replacement contact only a qualified engineer.

• **CARING FOR THE ENVIRONMENT**

– This appliance's packing materials are recyclable. Recycle them and play a role in protecting the environment by depositing them in local authority containers provided for this purpose.

– Your appliance also contains many recyclable materials. It is therefore marked with this logo to indicate that used appliances



must not be mixed with other waste. Recycling of the appliances organised by your manufacturer will thus be undertaken in optimum conditions, in accordance with European directive 2002/96/CE

relating to electrical and electronic equipment waste. Contact your local council or your retailer to find out the drop-off points for used appliances that are nearest to your home.

– We thank you for your help in protecting the environment.



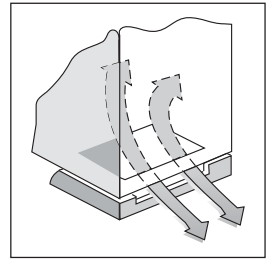
Warning

Installation should only be performed by qualified installers and technicians.

This appliance complies with the following European directives:

- Low Voltage Directive 2006/95/CE for affixing the CE mark.***
- Electromagnetic Compatibility Directive 2004/108/CE***
- CE regulation 1935/2004 concerning materials and objects intended for contact with food substances.***

•The sides and the base surface where the oven is to be installed should be milled as shown in figure to allow a safe air intake and a free air circulation around the oven, thus granting its good operation and avoiding damages to the furniture.

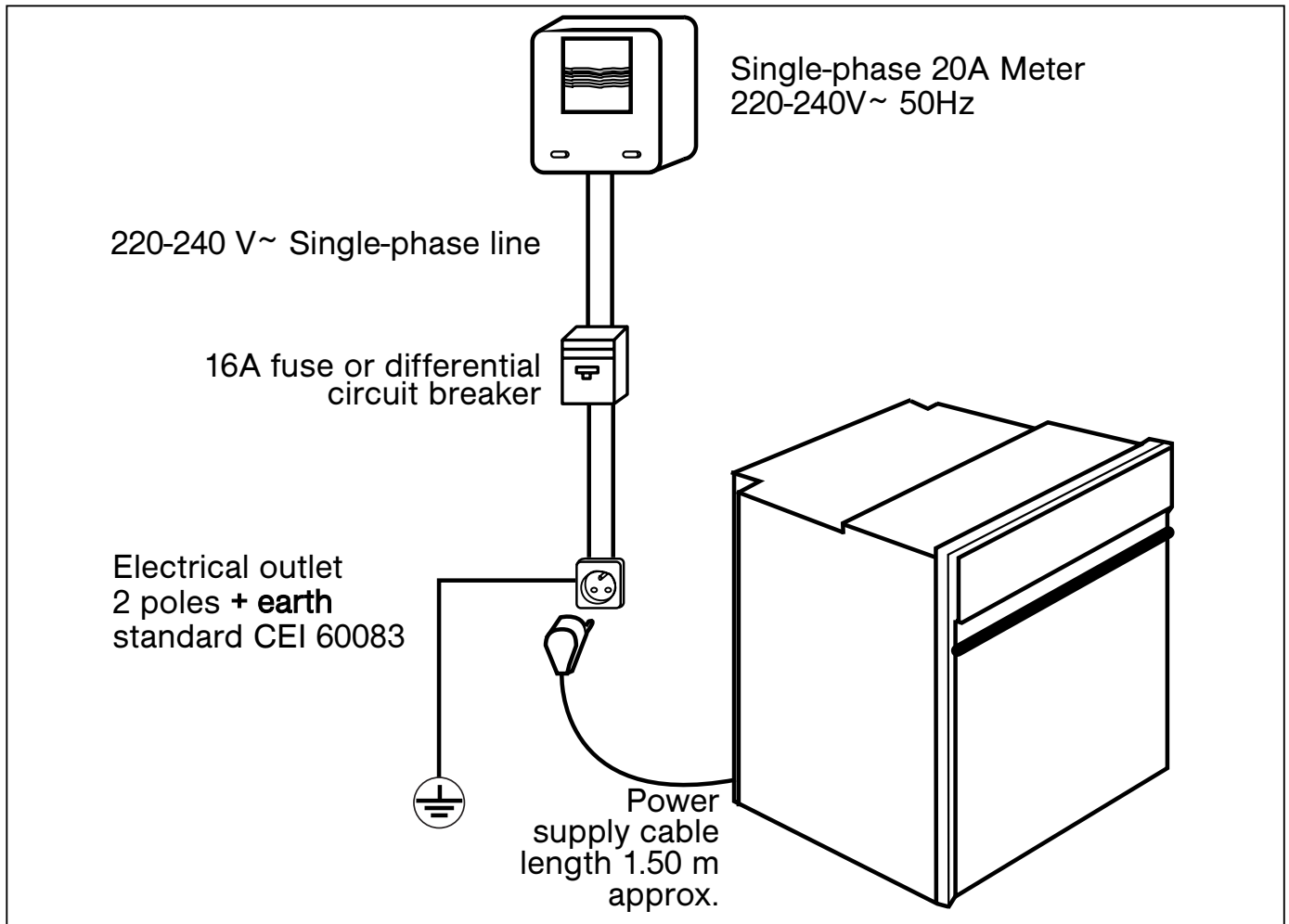


Pay attention to fix the ovens in an absolutely firm way, as above indicated, and to insulate the electrical elements in order to avoid an eventual contact with metallic parts.

Moreover, the bonding agent joining the rolled sections to the piece of furniture has to stand temperatures no lower than 90°C to avoid deformations and coating disjunction.

**Tip**

To be certain that you have properly installed your appliance, do not hesitate to call on a household appliance specialist.



• ELECTRICAL CONNECTION

The appliance must be fitted correctly to guarantee electrical safety. During fitting and maintenance operations, the appliance must be unplugged from the electrical grid. Fuses must be switched off or removed.

The electrical connections are made before the appliance is installed in its housing.

Ensure that:


- the electrical installation has sufficient voltage,
- the electrical wires are in good condition,
- the diameter of the wires complies with the installation requirements.

Your oven must be connected with a (standard) power cable with 3 conductors of 1.5mm² (1 live + 1 neutral + earth) which must be connected to a 220-240V~ single-phase

grid by means of a 1 live + 1 neutral + earth CEI 60083 standard power socket or via an all-poles cut-off device, with minimum opening between contacts of 3 mm, all-poles cut-off device in compliance with the installation rules.



Warning

The safety wire (green-yellow) is connected to the appliance's  terminal and must be connected to the earth terminal of the electrical set-up.

If the connection is to an electric wall socket, it must remain accessible after installation. The fuse in your set-up must be 16 amperes.


**Warning**

We cannot be held responsible for any accident resulting from inexistent, defective or incorrect earthing.

If the electrical installation in your residence requires any changes in order to hook up your appliance, contact a professional electrician.

If the oven malfunctions in any way, unplug the appliance or remove the fuse corresponding to the sector where the oven is hooked up.

• CHANGING THE POWER SUPPLY CABLE

- The power cable (H05 RR-F or H05 RN-F) must be of sufficient length to be connected to the build-in oven while it sits on the floor in front of the cabinet.
To do this the appliance must be disconnected from the electrical network.
- Open the inspection flap located at the lower right of the back cover by unscrewing the two screws, then pivot the inspection flap.
- Strip 12 mm along each wire of the new power cable.
- Carefully twist the strands together.
- Loosen the screws from the terminal board and remove the power cord to be replaced.
- Insert the power cable through the side of the cover into the cable clip located to the right of the terminal board.
- All the strands of the electrical wires must be secured tightly under the screws.
- The phase wire on the L terminal.
- The green-yellow coloured earth wire should be connected to the terminal .
- The neutral wire (blue) on the N terminal.
- Screw down tightly the screws on the terminal board and check the connection by pulling on each wire.
- Attach the cable with the cable clip located to the right of the terminal board.
- Close the inspection flap using the two screws.

• **CLEANING THE DOOR**

• **Disassembling the door**



Warning

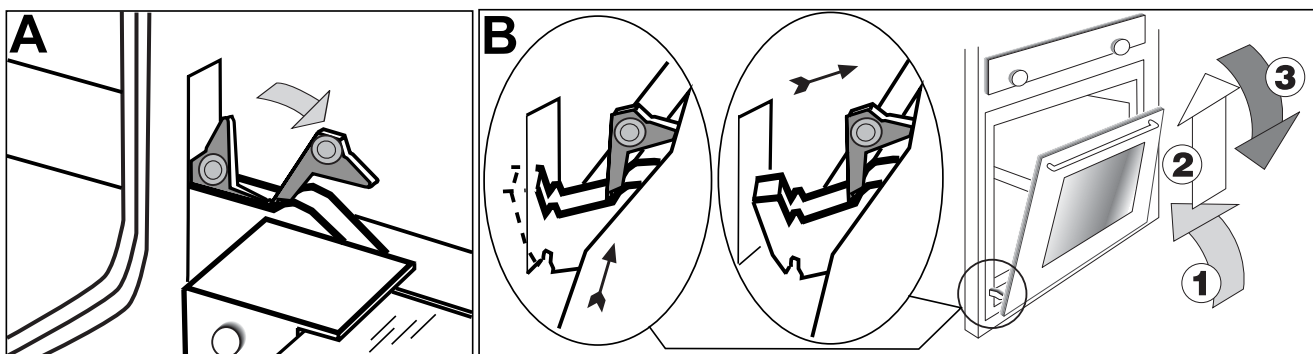
Before removing the door, allow the appliance to cool down.



Warning

Do not use abrasive cleaning products or hard metallic scrapers for cleaning the oven's glass door, as they could scuff the surface and cause the glass to shatter.

1. Set the oven door wide open.
2. Lift the hinge jumpers with your thumb and index fingers, then turn them fully outwards to the end of stroke (Fig.A).
3. Turn the door towards the closure position and lay it on the jumpers: in this way the hinge's spring is blocked. By fully closing the door the hinges are unhooked from the connection slits which are integral with the oven muffle (sequence 1,2,3 of fig.B).

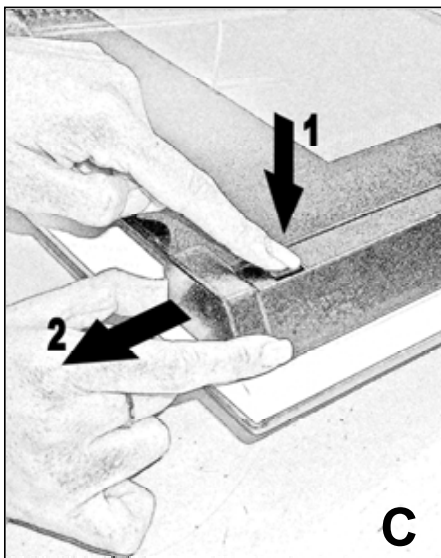


4. Re-assemble the door by carrying-out the aforesaid operations in the opposite order.

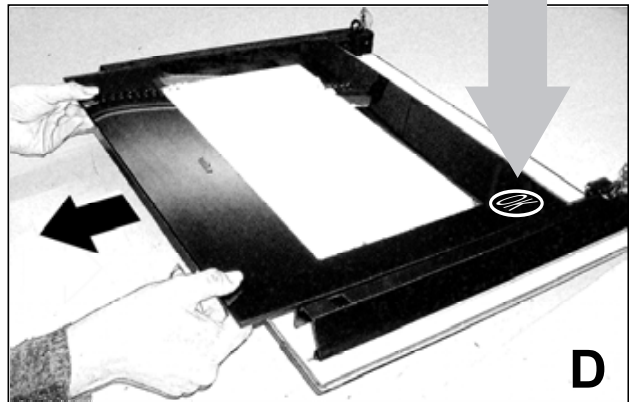
Disassembling of the door glasses

ATTENTION: for your safety, before removing the glasses you should remove the oven door.

To facilitate the cleaning, after having removed the door from the oven, you can proceed with the disassembly of the glass. Release the two upper blocks (picture C) so that the glass can be removed (picture D). After the cleaning you should reassemble the glass, replace the blocks and lock into position. Check that all components have been assembled correctly and then you can re-assemble the door onto the oven.



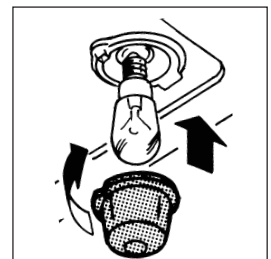
Please keep the (OK) symbol below on the right.



All the glasses used in this appliance has undergone a special safety treatment. Please never subject the glasses to thermal shock, for example never clean the glass when it is hot.

• REPLACING THE OVEN LAMP

Once the oven has been electrically disconnected, unscrew the glass protection cap and the bulb, replacing it with another one suitable for high temperatures (300°C / E14). Reassemble the glass cap and reconnect the oven.



Tip

To unscrew the view port and the light, use a rubber glove, which will make disassembly easier.

If you have a doubt about the correct functioning of your oven, this does not necessarily mean that there is a malfunction. *In any event, check the following points:*

YOU OBSERVE THAT...	POSSIBLE CAUSES	WHAT SHOULD YOU DO?
The oven is not heating.	<ul style="list-style-type: none"> - The oven is not connected to the power supply. - Your fuse is not working. - The selected temperature is too low. 	<ul style="list-style-type: none"> ➔ Plug in your oven. ➔ Replace the fuse in your electrical set-up and check its capacity (16A). ➔ Increase the selected temperature.
The oven light is not working.	<ul style="list-style-type: none"> - The light is not working. - The oven is not connected or the fuse is not working. 	<ul style="list-style-type: none"> ➔ Change the bulb. ➔ Plug in your oven or change the fuse.
Your oven is beeping.	<ul style="list-style-type: none"> - During cooking. - At the end of a cooking cycle. 	<ul style="list-style-type: none"> ➔ The temperature recommended for your choice has been reached. ➔ Your programmed cooking cycle is finished.
The cooling fan continues to operate after the oven stops.	<ul style="list-style-type: none"> - The fan should work for up to an hour after cooking, or when the oven temperature is greater than 125°C. - If it does not stop after 1 hour. 	<ul style="list-style-type: none"> ➔ Open the oven door to cool down the oven faster. ➔ Call the After-Sales Service Department.



Warning

- Repairs to your appliance should only be performed by professionals. Non-standard repairs may be a source of danger for the user.

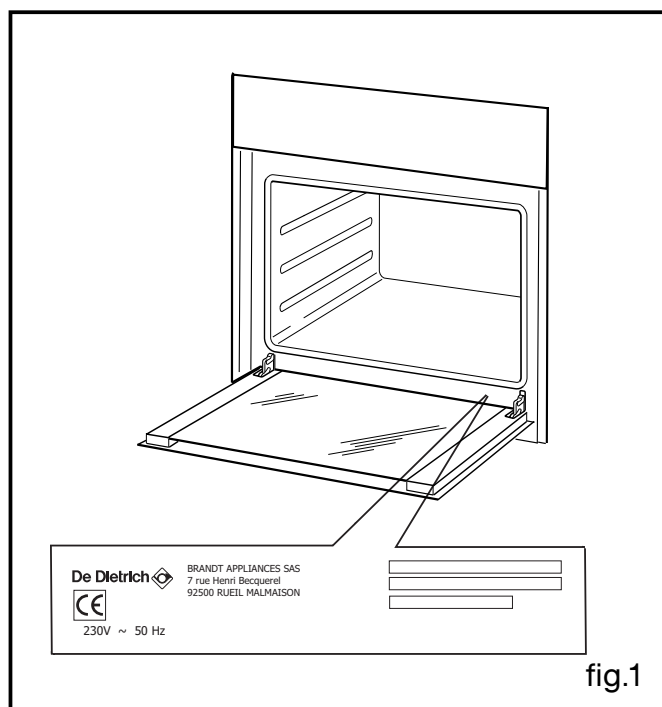


Tip

In all circumstances, if your efforts are not sufficient, contact the After-Sales Service Department without delay.

• SERVICE CALLS

Any repairs that are made to your appliance must be handled by a qualified professional authorised to work on the brand. When you call, mention your appliance's complete reference (model, type, serial number). This information appears on the manufacturer's nameplate (*fig. 1*).



GENUINE REPLACEMENT PARTS

During maintenance work, request that only **certified genuine replacement parts are used**.

